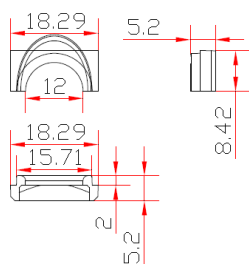
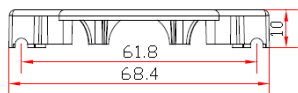
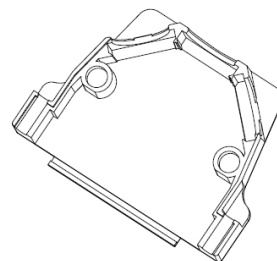
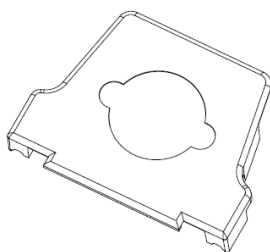
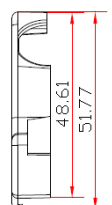
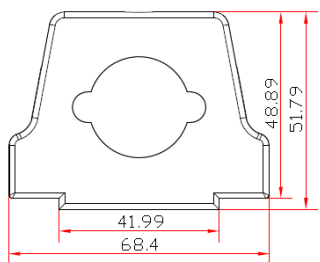
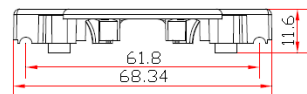
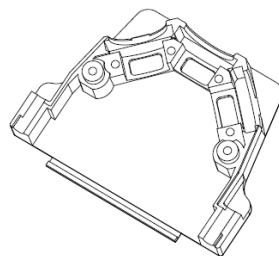
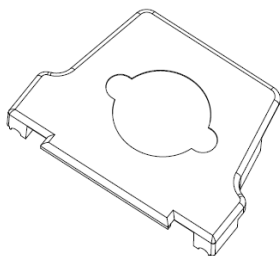
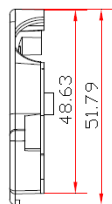
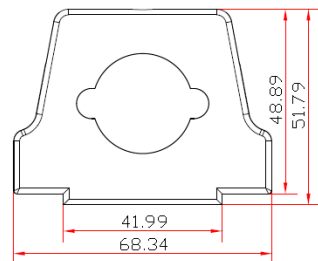
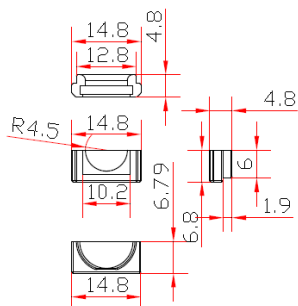
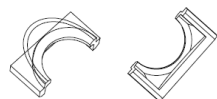


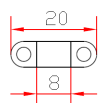
REV.	ECN. NO.	APPD.
A	WL-20-008	Jerry. Zhang



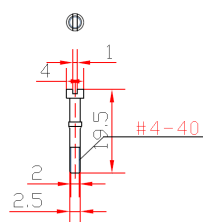
Cable Reduction Plate



Cable Reduction Plate



Cable Clamp



项目	名称	数量	材质
1	Hoods(Lid and base)	2PCS	Zinc Alloy
2	Screws For Hood		Iron
3	Screw For Clamp	2PCS	Iron
4	Locking Screw	2PCS	Iron
5	Cable Clamp	1PCS	Zinc Alloy
6	Strain Relief	4PCS	Zinc Alloy

X.±	X.±	UNITS	mm	NAME(INTENDED USE)			
.X± 0.3	.X±	MAT'L		D-Sub 50Pin 三孔金属壳 短螺杆			
.XX± 0.20	.XX±	SEE NOTES		PART NO.(INTENDED USE)	CLASS: <input type="checkbox"/> CONFIDENTIAL <input type="checkbox"/> SECRET <input checked="" type="checkbox"/> GENERAL		
.XXX±	.XXX±	FINISH		WL23-5701	TITLE: CONN DRAWING		
THESE DRAWINGS AND SPECIFICATIONS ARE THE PROPERTY OF INCEL INTERCONNECT TECHNOLOGY LIMITED, AND SHALL NOT BE REPRODUCED, COPIED OR USED IN ANY MANNER WITHOUT THE PRIOR WRITTEN CONSENT OF INCEL INTERCONNECT TECHNOLOGY LIMITED.				APPD:	yuan. wu 08/16~20	DWG NO.:	WL23-5701-0024
				Q'TY	CHKD:	lei. wang 08/16~20	SCALE
				DRAW:	min. sun 08/16~20		N/A 1/1 A